

How many of these flowers can you find on the Beacon?

- primrose
- lesser celandine
- meadow buttercup
- bluebell
- violet
- foxglove
- gorse
- oxeye daisy
- honeysuckle
- yellow rattle
- dog rose
- red campion
- stitchwort
- black bryony
- red clover
- pennywort
- vetch
- cuckoo-flower
- germander speedwell
- selfheal
- pignut
- climbing cordyalis

Springtime

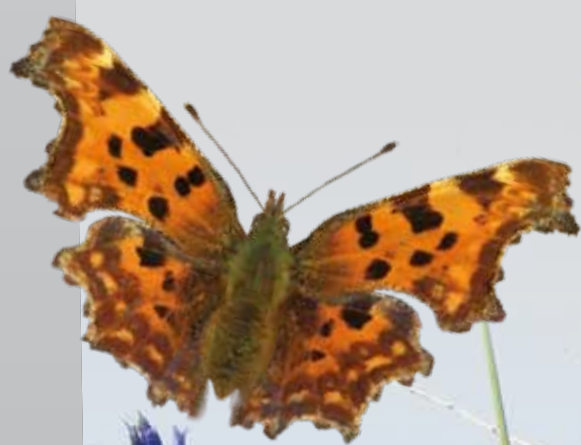
and the Beacon's noisy summer visitors come back!

Close your eyes and listen!

Some of them may not look much – **but can they sing!** And the local residents are pretty tuneful too!

Meanwhile the plants are coming back to life – and all the insects too!

Come up here on a fine spring morning and listen to Bodmin Beacon's Feathered Chorus. **Hallelujah!**



Can you... find the **bluebells** on the **Spring (Gwenton) Bench?**